

Planet Word

Self-guided group visit rotation schedule #1

The museum has galleries on three floors.

Your group visit can be divided into approximately three 40 minute chunks. **You should travel from floor 3 to 2 to 1.**

Step 1: Floor 3

Spend your first 40 minutes on the third floor.

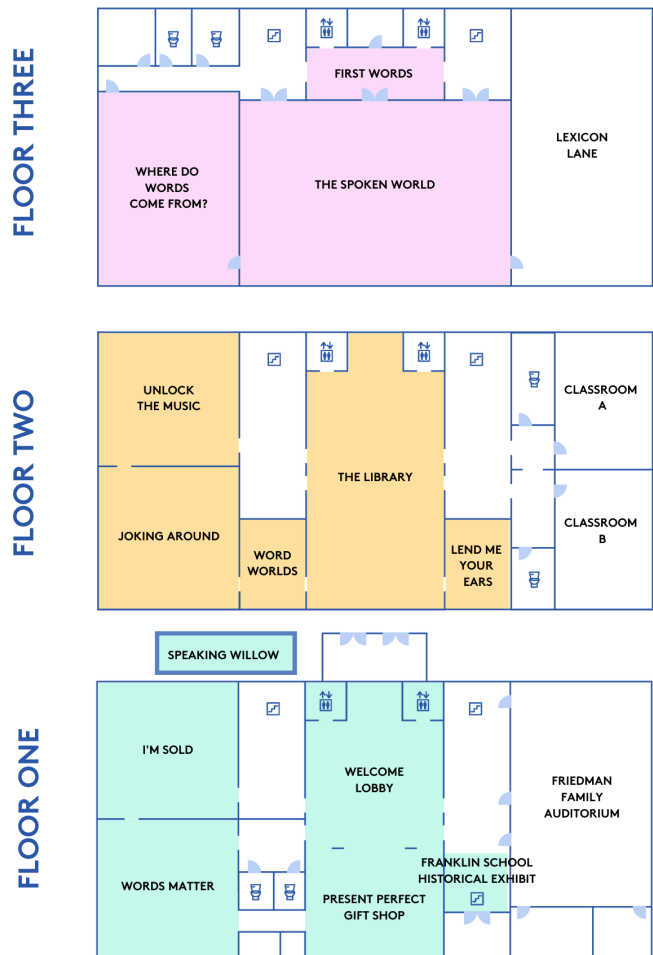
Step 2: Floor 2

Spend your second 40 minutes on the second floor.

Step 3: Floor 1

Spend your last 40 minutes on the first floor (including the gift shop, historical exhibit, and visiting the Speaking Willow outside.)

Museum Map

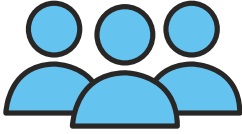


There may be other groups on your floor so please practice social distancing between groups!

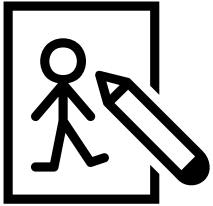


Group Guidelines

We rely on adult chaperones to help model and reinforce positive visitor behavior. Please practice these rules with your students:



Groups must stay with their chaperone at all times!



Planet Word is a shared space. Please take turns, be respectful, and only post content appropriate for all ages.



Masks are recommended but not required.



We encourage visitors to speak with the exhibits, but please do not scream. The exhibits work best if you speak clearly, directly into the microphone.



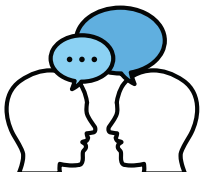
Please be gentle with our hands-on experiences.



Walk, do not run, in the museum.



Food and drinks are not allowed in the galleries.



Listen for and follow any instructions from Planet Word staff!

Planet Word

Self-guided group visit rotation schedule #2

The museum has galleries on three floors.

Your group visit can be divided into approximately three 40 minute chunks. **You should travel from floor 2 to 1 to 3.**

Step 1: Floor 2

Spend your first 40 minutes on the second floor.

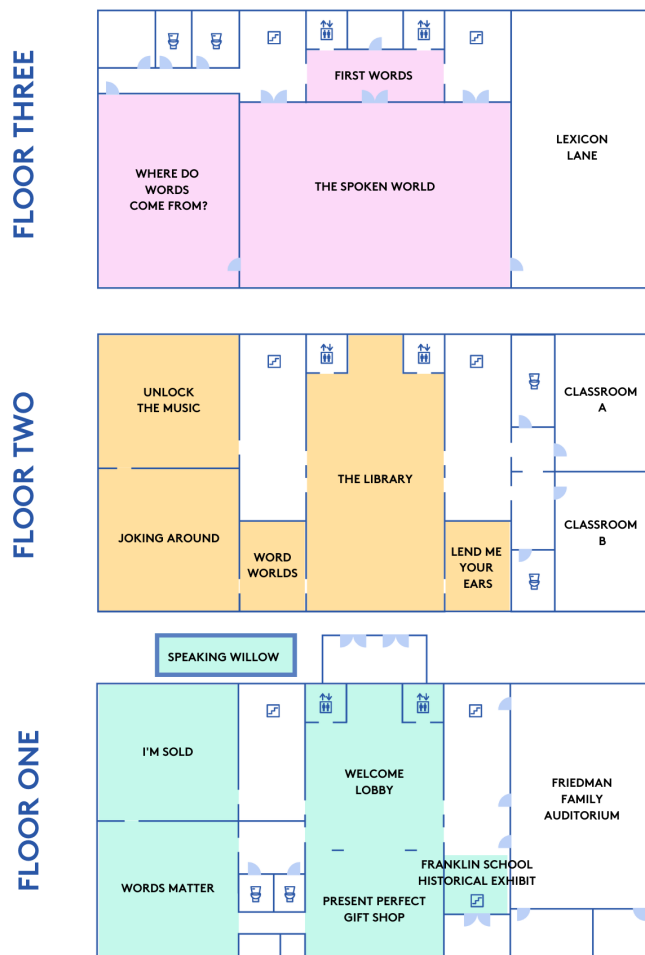
Step 2: Floor 1

Spend your second 40 minutes on the first floor.
(including the gift shop, historical exhibit, and visiting the Speaking Willow outside.)

Step 3: Floor 3

Spend your last 40 minutes on the third floor.

Museum Map

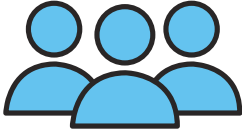


There may be other groups on your floor so please practice social distancing between groups!

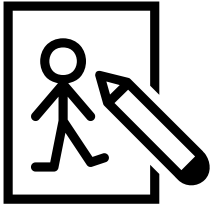


Group Guidelines

We rely on adult chaperones to help model and reinforce positive visitor behavior. Please practice these rules with your students:



Groups must stay with their chaperone at all times!



Planet Word is a shared space. Please take turns, be respectful, and only post content appropriate for all ages.



Masks are recommended but not required.



We encourage visitors to speak with the exhibits, but please do not scream. The exhibits work best if you speak clearly, directly into the microphone.



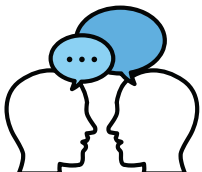
Please be gentle with our hands-on experiences.



Walk, do not run, in the museum.



Food and drinks are not allowed in the galleries.



Listen for and follow any instructions from Planet Word staff!

Planet Word

Self-guided group visit rotation schedule #3

The museum has galleries on three floors.
Your group visit can be divided into approximately three 40 minute chunks. **You should travel from floor 1 to 3 to 2.**

Step 1: Floor 1

Spend your first 40 minutes on the first floor.
(including the gift shop, historical exhibit, and visiting the Speaking Willow outside.)

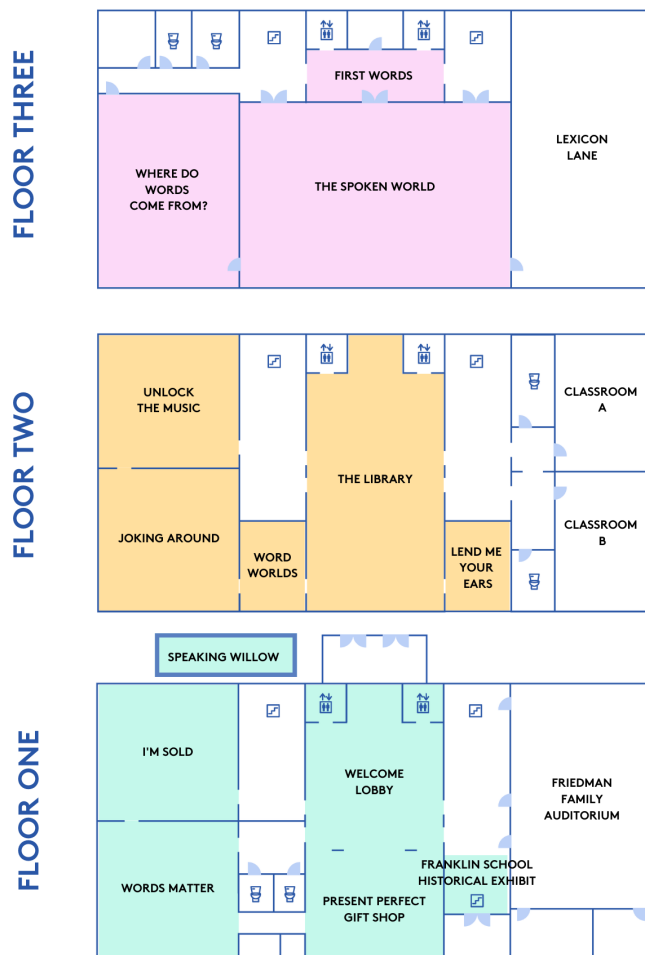
Step 2: Floor 3

Spend your second 40 minutes on the third floor.

Step 3: Floor 2

Spend your last 40 minutes on the second floor.

Museum Map

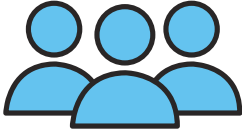


There may be other groups on your floor so please practice social distancing between groups!

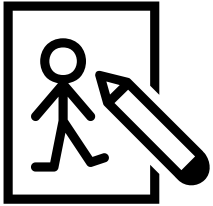


Group Guidelines

We rely on adult chaperones to help model and reinforce positive visitor behavior. Please practice these rules with your students:



Groups must stay with their chaperone at all times!



Planet Word is a shared space. Please take turns, be respectful, and only post content appropriate for all ages.



Masks are recommended but not required.



We encourage visitors to speak with the exhibits, but please do not scream. The exhibits work best if you speak clearly, directly into the microphone.



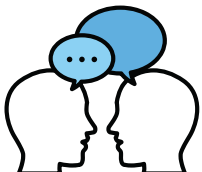
Please be gentle with our hands-on experiences.



Walk, do not run, in the museum.



Food and drinks are not allowed in the galleries.



Listen for and follow any instructions from Planet Word staff!