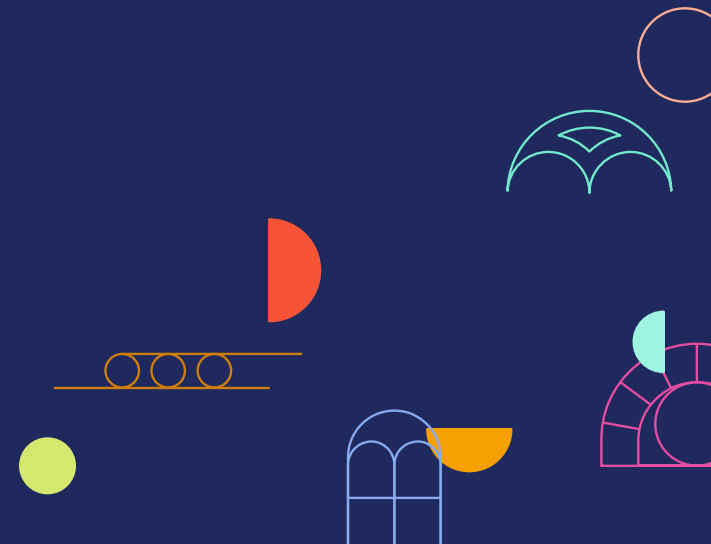




PLANET
WORD

PRIVATE EVENTS AT PLANET WORD





Contents

HOST AN EVENT AT PLANET WORD	2
ABOUT US	2
EVENT SPACES	3
Mansard Room	4
Specifications	5
Rooftop Terrace	6
Bloomberg Philanthropies Great Hall	7
Specifications	8
Word Wall	9
AT&T Plaza	10
Welcome Lobby	11
Friedman Family Auditorium	12
Lunch at Lexicon Lane	13
ROOM USAGE RATES	14
APPROVED CATERERS	15
PRIVATE EVENTS GIFT GUIDE	16
CONTACT US	17

Host an event at Planet Word!

I do. Meeting adjourned. L’Chaim!
What’s on the agenda? ¡Feliz
Cumpleaños! Congratulations!
And many more ...

Whatever words you need to say,
Planet Word has just the right space
for you. What memories will you
create here?

READY TO VISIT PLANET WORD?

✉ Email us at:
host@planetwordmuseum.org

ABOUT US

THE FRANKLIN SCHOOL

Planet Word occupies the historic Franklin School, a 50,000-square-foot, five-story building located on Franklin Square at 13th and K streets in northwest Washington, D.C.

Designed by renowned architect Adolf Cluss and opened in 1869, the Franklin School was the flagship of the first public schools in Washington, D.C. The school offered free universal education to boys and girls, serving as a model for the modern public school system.

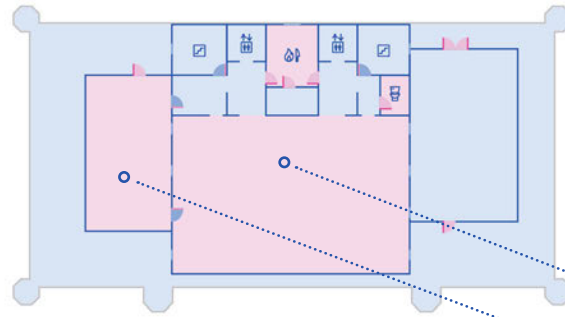
The Franklin School was designated a National Historic Landmark in 1996.

PLANET WORD

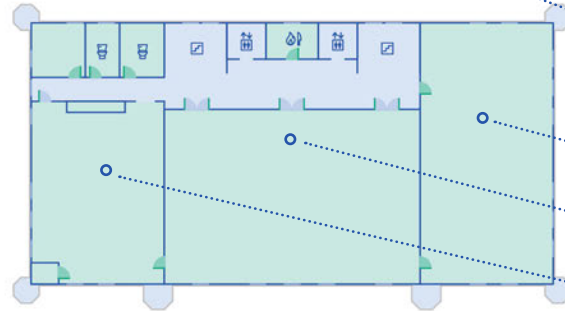
Graced with grand windows, intricate ironwork, and lofty ceilings, the landmark Franklin School, home of Planet Word, is a uniquely stunning space for your most important personal and corporate events. From the moment your guests enter the letter-paved lobby, they’ll know they’re in a one-of-a-kind place, surrounded by words and language in the city founded on the written word. Get ready for your guests to be inspired by the power, fun, and beauty of words while you explore our many unique voice-activated galleries and exhibits. Planet Word is proud to make our spaces available to all who share our mission to renew and inspire a love of words and language.

Event Spaces

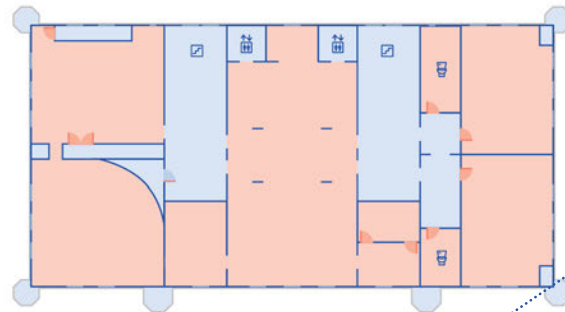
4 FOURTH FLOOR



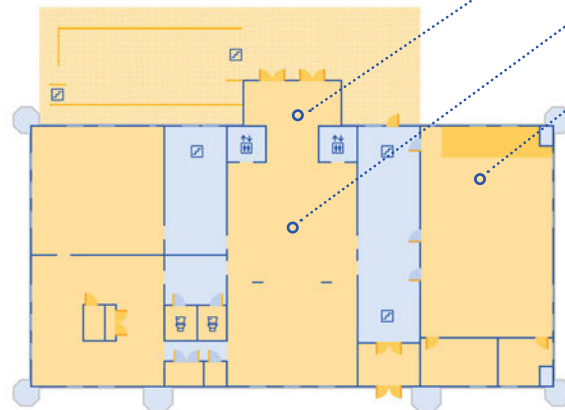
3 THIRD FLOOR



2 SECOND FLOOR



1 FIRST FLOOR



MANSARD ROOM

ROOFTOP TERRACE

LEXICON LANE

BLOOMBERG PHILANTHROPIES GREAT HALL

WORD WALL

AT&T PLAZA

WELCOME LOBBY

FRIEDMAN FAMILY AUDITORIUM

 Bathrooms

 Stairs

 Elevator

 Kitchen



DIMENSIONS

2697 ft², 67'x40'

CAPACITY

SEATED DINNER: 144

STANDING RECEPTION: 260

LECTURE SEATING: 216

AV CAPABILITIES

Decorative pendant lighting, color tunable cove lighting, 165" LCD digital screen, wireless microphones, speakers, WiFi, and a dedicated network hardline

OTHER FEATURES

Catering kitchen, restrooms

STANDARD USE

WEEKEND: \$11,950

WEEKDAY: \$10,250

NON-PROFIT WEEKEND: \$9,450

NON-PROFIT WEEKDAY: \$8,950



Mansard Room

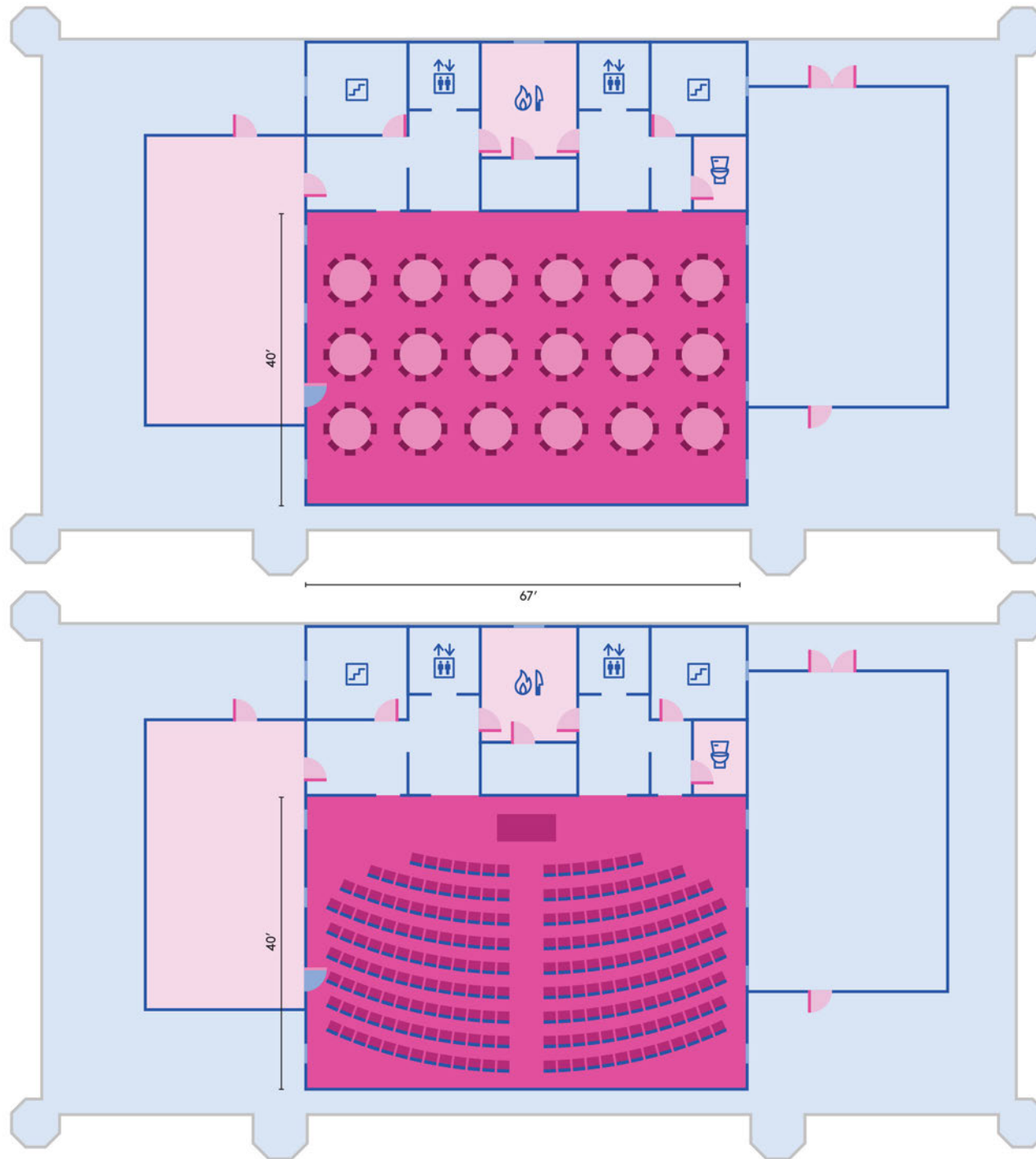
4 FOURTH FLOOR



[CLICK FOR A VIRTUAL TOUR](#)

Beautiful exposed beams, wood floors, and frescoed walls make this an unforgettable venue for meetings and celebrations of all sorts. Under a soaring mansard roof, this space can be configured for elegant dinners, performances, meeting, or receptions. A special exhibit commemorates inventor Alexander Graham Bell's first successful transmission of a "photophone" message from the rooftop of the Franklin School. The Mansard Room can host programming any time of day and includes the use of our Rooftop Terrace.

Mansard Room & Rooftop Terrace



CONFIGURATIONS





4 FOURTH FLOOR

SEATED DINNER

18 circular tables
8 guests per table
144 total guests

VIDEO SCREENING SEATING

9 rows
up to 26 guests per row
216 total guests

-  Bathrooms
-  Stairs
-  Elevator
-  Kitchen



DIMENSIONS

832 ft², 23'x36'

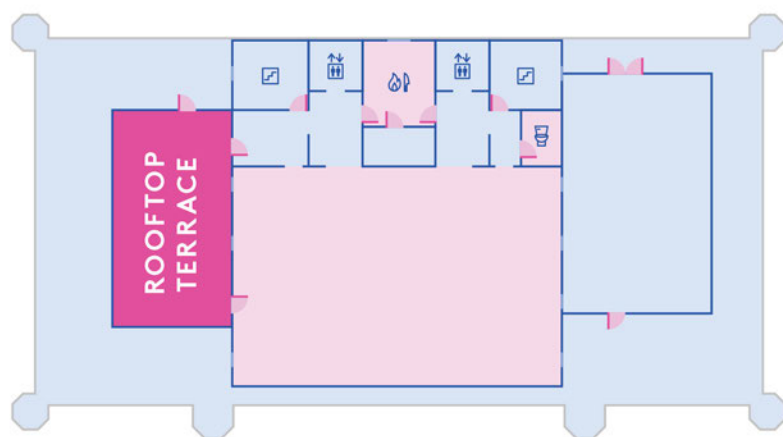
CAPACITY

STANDING RECEPTION: 75

AV CAPABILITIES

Built-in speakers, power,
WiFi

THE ROOFTOP TERRACE IS INCLUDED
WITH THE MANSARD ROOM



Rooftop Terrace

4 FOURTH FLOOR



[CLICK FOR A VIRTUAL TOUR](#)

With views north and west across verdant Franklin Square and the rooftops of the K Street Corridor, the Rooftop Terrace is a gorgeous outdoor venue for pre-dinner cocktails, post-dinner dessert, or a sunset reception.



DIMENSIONS

3122ft², 67'x46'6"

CEILING HEIGHT: 22'

CAPACITY

SEATED DINNER: 152

STANDING RECEPTION: 300

LECTURE SEATING: 240

AV CAPABILITIES

Striking LED chandelier, WiFi, and a dedicated network hardline

OTHER FEATURES

Catering kitchen, restrooms, green room

STANDARD USE

WEEKEND: \$13,125

WEEKDAY: \$11,750



Bloomberg Philanthropies Great Hall

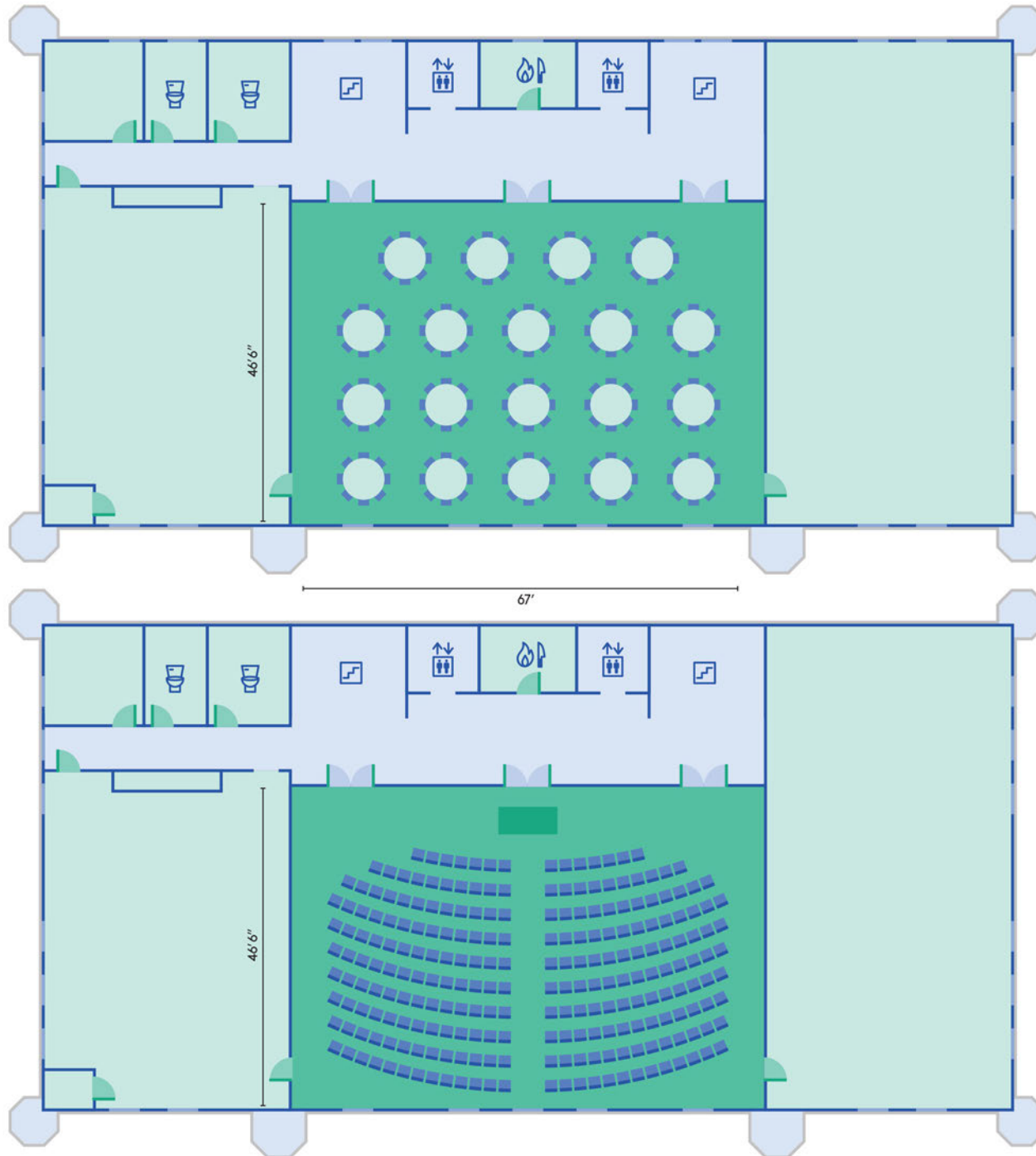
3 THIRD FLOOR



[CLICK FOR A VIRTUAL TOUR](#)

The Bloomberg Philanthropies Great Hall is the architectural centerpiece of the Franklin School and Planet Word's showcase venue both day and night. The 5,000-LED globe that anchors the Spoken World exhibit becomes a stunning chandelier as it rises at the touch of a button up to the towering 22-foot-high ceiling. With fourteen-foot windows overlooking Franklin Square, trompe l'oeil frescoes, and a historic proscenium, the elegant, versatile Bloomberg Philanthropies Great Hall is unlike any other event space in Washington.

Bloomberg Philanthropies Great Hall



CONFIGURATIONS





3 THIRD FLOOR

SEATED DINNER

19 circular tables
8 guests per table
152 total guests

LECTURE SEATING

10 rows
up to 26 guests per row
240 total guests

-  Bathrooms
-  Stairs
-  Elevator
-  Kitchen



DIMENSIONS

904 ft², 20'8" x 43'9"

CAPACITY

STANDING RECEPTION: 75

AV CAPABILITIES

Power, WiFi

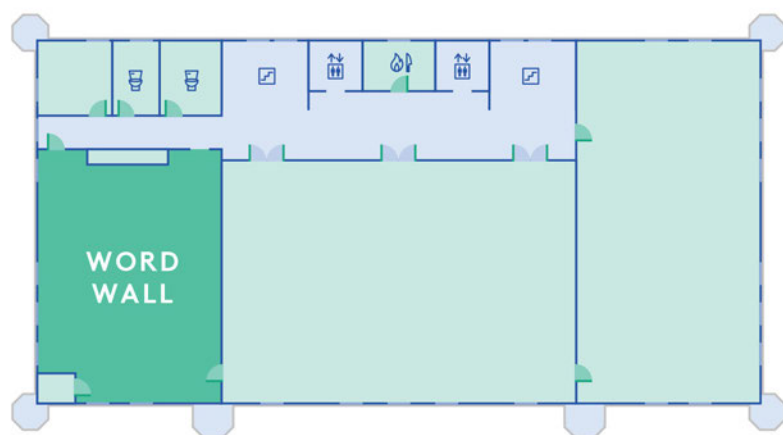
Word Wall

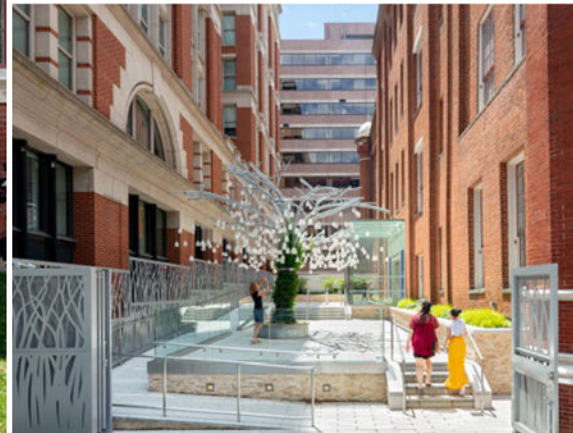
3 THIRD FLOOR



[CLICK FOR A VIRTUAL TOUR](#)

The 22-foot-tall wall of words is the star of the show in this unique venue, where guests discover the etymology of words — where do words come from and what will you do with your words? The space is perfect for pre-dinner cocktails, post dinner dessert, an extra bar, or a lounge. The Word Wall can be added to any use of the Great Hall.





DIMENSIONS

2779 ft², 65'x43'

CAPACITY

STANDING RECEPTION: 275

ADD THE AT&T PLAZA AND WELCOME LOBBY FOR:

WEEKEND: \$3,150

WEEKDAY: \$2,800

NON-PROFIT WEEKEND: \$2,650

NON-PROFIT WEEKDAY: \$2,500



AT&T Plaza

1 FIRST FLOOR



[CLICK FOR A VIRTUAL TOUR](#)

Anchored by Speaking Willow, an interactive sculpture from renowned artist Rafael Lozano-Hemmer, the AT&T Plaza is a ground level courtyard oasis just off K Street. The space includes a raised platform at the South end suitable for remarks, a bar, or a small band.



DIMENSIONS

1119 ft², 31'x36'

CAPACITY

STANDING RECEPTION: 100

AV CAPABILITIES

WiFi

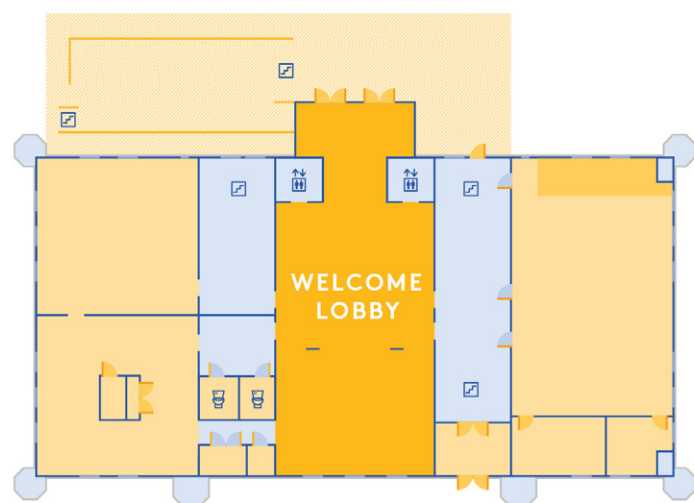
ADD THE AT&T PLAZA AND WELCOME LOBBY FOR:

WEEKEND: \$3,150

WEEKDAY: \$2,800

NON-PROFIT WEEKEND: \$2,650

NON-PROFIT WEEKDAY: \$2,500



Welcome Lobby

1 FIRST FLOOR



[CLICK FOR A VIRTUAL TOUR](#)

Our delightful Welcome Lobby makes a flexible gathering place: its welcome desk can double as a bar and the glass-enclosed entry vestibule can serve as a check-in area. The space features graceful details like the iconic arches that define the Franklin School, and terrazzo floors embedded with a swirling design of written symbols from the past to the present. The Welcome Lobby can be combined with the AT&T Plaza or the Friedman Family Auditorium for larger events or can serve as a pre-dinner cocktail space when combined with the Bloomberg Philanthropies Great Hall.



DIMENSIONS

1802 ft², 31'x58'

CAPACITY

AUDITORIUM SEATING: 150

AV CAPABILITIES

HD projector, large projection screen, architectural and theatrical lighting, built-in audio system with wireless microphones, WiFi

OTHER FEATURES

Green room, tech booth, outside entrance

ACCESSIBILITY

Assisted listening

STANDARD USE

WEEKEND: \$2,625

WEEKDAY: \$2,100

NON-PROFIT WEEKEND: \$2,100

NON-PROFIT WEEKDAY: \$1,575



Friedman Family Auditorium

1 FIRST FLOOR



[CLICK FOR A VIRTUAL TOUR](#)

This 150-seat, beautifully appointed auditorium serves as a venue for Planet Word's public programming — film screenings, author book talks, educator convenings, and more. The space includes a dedicated AV booth and a greenroom, and offers a separate entrance right off the AT&T Plaza.



CAPACITY

Up to 40 guests

STANDARD USE

0-20 GUESTS: \$1,000

20-40 GUESTS: \$1,500

ADD ON A 1-HOUR GALLERY VISIT FOR:

\$210

MENU

TIER 1: THE WELCOME PACKAGE | \$25/pp

TIER 2: THE IMMIGRANT + PACKAGE | \$30/pp

TIER 3: THE JOURNEY PACKAGE | \$40/pp

[VIEW THE FULL MENU HERE:](#)

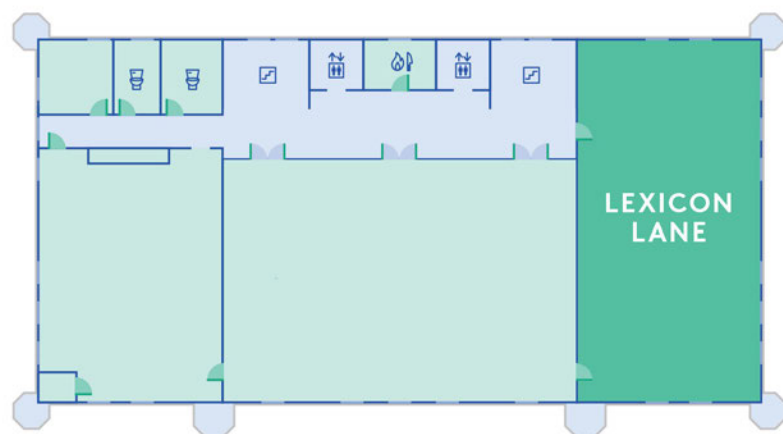


Lunch at Lexicon Lane

3 THIRD FLOOR

[CLICK FOR A VIRTUAL TOUR](#)

Embark on a uniquely Planet Word adventure with lunch and puzzlemania at Lexicon Lane! First, test your group's sleuthing skills as you work together to solve all sorts of stimulating word puzzles and a related grand mystery. And after you've worked up your appetite, enjoy a tasty, globally-inspired lunch from our partner Immigrant Food. Lexicon Lane is available for private reservations, with the price including two hours of puzzle solving and individual lunches. Want more Planet Word? Add an extra hour of museum time before or after your Lunch at Lexicon Lane visit. Whichever option you choose, it all adds up to an unforgettable, truly fulfilling outing for your friends or colleagues.



Room Usage

EVENT SPACE	WEEKEND	WEEKDAY	NON-PROFIT WEEKEND	NON-PROFIT WEEKDAY
Full Building	\$33,000	\$29,700	\$28,000	\$26,400
Bloomberg Philanthropies Great Hall	\$13,125	\$11,750	—	—
Bloomberg Philanthropies Great Hall & Word Wall	\$14,500	\$13,350	—	—
Mansard Room and Rooftop Terrace	\$11,950	\$10,250	\$9,450	\$8,950
Friedman Family Auditorium	\$2,625	\$2,100	\$2,100	\$1,575
Great Hall & Word Wall + Mansard Room & Rooftop Terrace	\$17,750	\$16,275	—	—
Add the AT&T Courtyard and Lobby	\$3,150	\$2,800	\$2,650	\$2,500
Add a Classroom	\$1,250	\$1,000	\$1,000	\$800
Add our Gallery Experience	\$650/hr <i>(Gallery Experiences starting 90 or more minutes after Museum close will incur an additional staffing fee)</i>			

Approved Caterers

CATERER	CONTACT	INSTAGRAM
Design Cuisine	Sarah Lusk sarah.lusk@designcuisine.com	@designcuisine
Flavorture	Sarah Miller sales@flavorture.com	@flavorture
Spilled Milk	Amit Gulati amit@spilledmilkcatering.com	@spilledmilkdc
Well Dunn	Amy Lewerenz alewerenz@welldunn.com	@welldunncatering
Windows	Anne Movaghari amovaghari@catering.com	@windowscatering
Immigrant Food <i>On-site Partner</i>	Annie Kemmerer annie@immigrantfood.com	@immigrantfood

Private Events Gift Guide



Magnet
(3"x3")
\$5.00



Sticker
(4"x3")
\$5.00



Enamel
Pin
\$10.00



Mug
\$15.00



Franklin
School
Tote
\$16.00



Block
Letters
Tote
\$16.00



Canvas
Tote
\$20.00



Fuchsia
Hat
\$20.00



Gray
Hat
\$20.00



Navy
Hat
\$20.00



Half Full /
Half Empty
Water Bottle
(Navy/White)
\$34.00 / 20 oz
\$26.00 / 17 oz



Foul
Weather
Umbrella
\$34.00



Silver Lining
Umbrella
\$34.00



Tempest
in a Teapot
Umbrella
\$34.00



Some items may have minimum order quantities. All orders subject to DC sales tax.



WHAT MEMORIES WILL YOU CREATE HERE?

PLANET WORD
925 13th Street, NW
Washington, D.C. 20005

host@planetwordmuseum.org

PHOTO CREDITS: Les Talusan, DuHon Photography,
and Joseph Romeo