



PLANET
WORD



LUNCH AT LEXICON LANE



CAPACITY

Up to 40 guests

STANDARD USE

0-20 GUESTS: \$1,000

20-40 GUESTS: \$1,500

ADD ON A 1-HOUR GALLERY VISIT FOR:

\$210

MENU

TIER 1: THE WELCOME PACKAGE | \$25/pp

TIER 2: THE IMMIGRANT + PACKAGE | \$30/pp

TIER 3: THE JOURNEY PACKAGE | \$40/pp

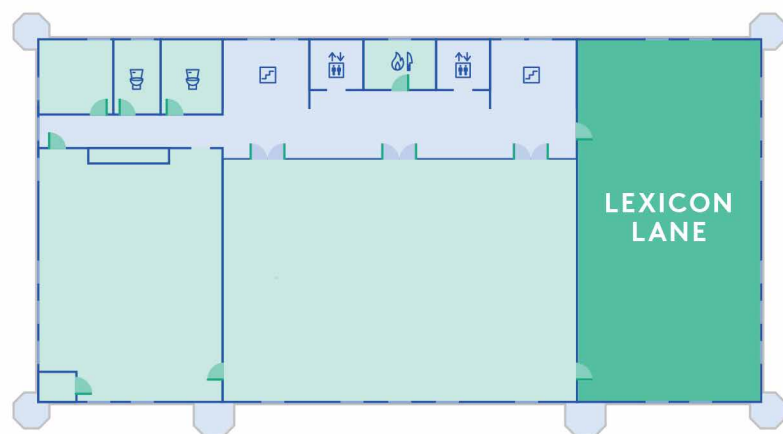
[VIEW THE FULL MENU HERE:](#)



Lunch at Lexicon Lane

3 THIRD FLOOR

Embark on a uniquely Planet Word adventure with lunch and puzzlemania at Lexicon Lane! First, test your group's sleuthing skills as you work together to solve all sorts of stimulating word puzzles and a related grand mystery. And after you've worked up your appetite, enjoy a tasty, globally-inspired lunch from our partner Immigrant Food. Lexicon Lane is available for private reservations, with the price including two hours of puzzle solving and individual lunches. Want more Planet Word? Add an extra hour of museum time before or after your Lunch at Lexicon Lane visit. Whichever option you choose, it all adds up to an unforgettable, truly fulfilling outing for your friends or colleagues.



Immigrant Food Packages



TIER	The Welcome Package \$25/pp	The Immigrant+ Package \$30/pp	The Journey Package \$40/pp
STARTERS	(not incl.)	Tequeños: Venezuelan fried dough stuffed with queso blanco, and chili mayo	Mezze Platter: A selection of spreads (muhammara, labne, and hummus) served with vegetables, olives, and warm za'atar na'an Miso Caesar Salad: Shitake mushroom "bacon," zesty wontons and sesame
MAIN	Choice of any Lunch Box option		
SIDE	Cookie (chocolate chip or oatmeal raisin) & Chips	Cookie (chocolate chip or oatmeal raisin) & Chips	Chips & Signature Brownie (decadent chocolate brownies)
BEVERAGE	Soft drinks (Coke, Diet Coke, Sprite, or bottled water)	Choice of soft drinks, sparkling water, or seasonal non-alcoholic beverages	Choice of soft drinks, sparkling water, or seasonal non-alcoholic beverages

LUNCH BOX OPTIONS

- Madam VP's Heritage Bowl:** Coconut-milk curried chicken stew, chickpeas, potatoes, pineapples, plantains, and jalapeño, served over turmeric rice and baby spinach
- Immigrant Poke Bowl:** Spring mix, sushi rice, poke salmon, bean sprout, cucumber salad, corn, carrots, cilantro, and Korean mayo
- Viet Vibes Bowl*:** Adobo-spiced chicken on kale, rice noodles, broccoli, peanuts, soy sprouts, jalapeño, mango, and spicy pho vinaigrette. Contains peanuts.
* Vegetarian: Bean-Shroom Substitute Available, \$1 upcharge
- Old Saigon Sandwich:** Adobo spiced chicken, chili mayo, daikon slaw

BEVERAGES

- Agua de Jamaica:** Iced tea made from hibiscus flowers, popular in many Latin American countries
- Pineapple Matcha:** An antioxidant energy boost with fresh pineapple, chamomile, lemongrass, and matcha

ADDITIONAL NOTES:

- Disposable goods (utensils, napkins, glasses, plates, etc.) are \$3/person
- All items are subject to a 22% taxable service charge and 10% sales tax

To place your lunch order, please contact Annie Kemmerer at annie@immigrantfood.com.

Frequently Asked Questions



▶ When should we arrive for Lunch at Lexicon Lane?

We suggest that guests arrive 15 minutes ahead of the scheduled start time to get settled in and for a brief orientation before your literary adventure begins!

▶ What does the event flow look like?

Guests will enjoy puzzles for the first hour and then transition to lunch for the next hour. In most cases, we can accommodate a visit to our galleries before or after your time in Lexicon Lane.

▶ How does payment work?

Planet Word will send an invoice for the Lexicon Lane experience and any gallery time you may choose to add. Immigrant Food will invoice separately for food and beverage.

▶ How long does the puzzle experience take?

Each puzzle should take 45 minutes to an hour to complete.

▶ What if I get stuck?

We'll have our friendly Word Associates in the room to cheer you on and provide hints and clues if you need a little help.

▶ Can we bring our own food/drinks/alcoholic beverages?

All food and beverage will be coordinated via Immigrant Food. Lunch at Lexicon Lane is currently a non-alcoholic experience.

▶ Are there accessibility options for the puzzles?

Yes, we have large-print versions of our case instructions and magnifying glasses are also available. Lighting levels can be adjusted as needed.



Description of Puzzle Cases



There are 26 cases at Lexicon Lane — one for every letter of the alphabet. We recommend the following cases for large groups. You can pre-select cases, or our expert Word Associates will help you make selections when you arrive. And, of course, we hope you'll be back again to try our full selection!



Case Ç: Le Petit Cupcake Café

Take a delicious journey through Madame Macaron's French baker! Sift through her puzzles to unlock tasty treats.



Case J: Jukebox Hero

Jump back in time and enjoy the tunes of yesteryear — but keep an eye and ear out for secrets hidden in the songs!



Case K: A K-9 Kaper

Kiki, Lexicon Lane's smartest doggo, has been researching animal communication methods. Use her research to decode a special message from Kiki.



Case N: Nefertari's Pyramid Puzzle

Examine the long-lost papyrus of Queen Nefertari. Decipher her encoded hieroglyphics for a message that dates back to the Ancient Egyptian era!



Case P: Purplebeard's Lost Pirate Treasure

Avast, me hearties! All hands-on deck for this pirate-themed puzzle that will be sure to put the wind in any seadogs' sails as you hunt for golden doubloons!



Case S: Serving Up Soda

Put your culinary skills to the test! Scour Lexicon Lane to find the ingredients to Maria's famous soda.



Case T: Teatime Teasers

Grab a cup and steep in these tea-time puzzles. Take it with sugar or milk, but get ready to dive in!



Case V: The Vikings' Runes

Prove your strength by answering the epic Edda poems. Let the runes guide you to Valhalla.



Case W: Wedding Woes

Help the bride and groom say, "I do!" on their special day. With everything going awry, be sure to check the music, flowers, and more!



Case X: X-Ray Shenanigans

Ouch! Xavier has come down with quite a sickness. Assist the doctor while he tries to treat his ailing patient.