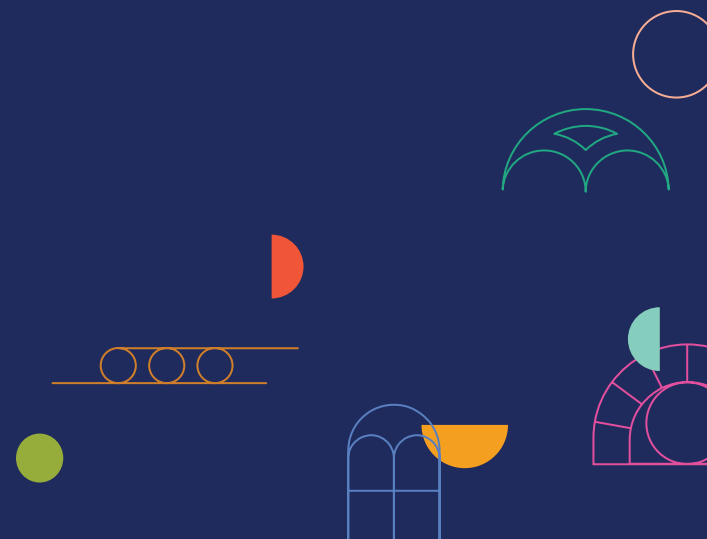




# PRIVATE GROUPS AT PLANET WORD





# Contents

HOST AN EVENT AT PLANET WORD .....	2
ABOUT US .....	2
EVENT SPACES.....	3
<b>Mansard Room</b> .....	4
Specifications .....	5
<b>Rooftop Terrace</b> .....	6
<b>Bloomberg Philanthropies Great Hall</b> .....	7
Specifications .....	8
<b>Word Wall</b> .....	9
<b>AT&amp;T Plaza</b> .....	10
<b>Welcome Lobby</b> .....	11
<b>Friedman Family Auditorium</b> .....	12
ROOM USAGE RATES .....	13
APPROVED CATERERS.....	14
CONTACT US.....	15

# Host an event at Planet Word!

I do. Meeting adjourned. L'Chaim!  
What's on the agenda? ¡Feliz  
Cumpleaños! Congratulations!  
And many more ...

Whatever words you need to say,  
Planet Word has just the right space  
for you. What memories will you  
create here?

READY TO VISIT PLANET WORD?

✉ Email us at:  
[host@planetwordmuseum.org](mailto:host@planetwordmuseum.org)

## ABOUT US

### THE FRANKLIN SCHOOL

Planet Word occupies the historic Franklin School, a 50,000-square-foot, five-story building located on Franklin Square at 13th and K streets in northwest Washington, D.C.

Designed by renowned architect Adolf Cluss and opened in 1869, the Franklin School was the flagship of the first public schools in Washington, D.C. The school offered free universal education to boys and girls, serving as a model for the modern public school system.

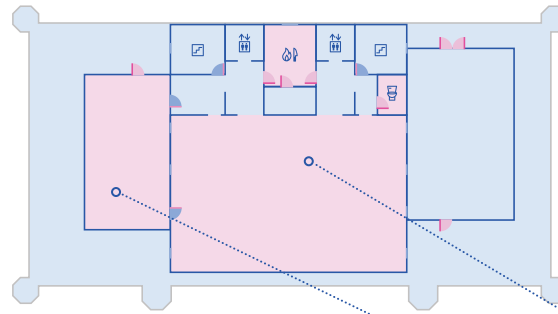
The Franklin School was designated a National Historic Landmark in 1996.

### PLANET WORD

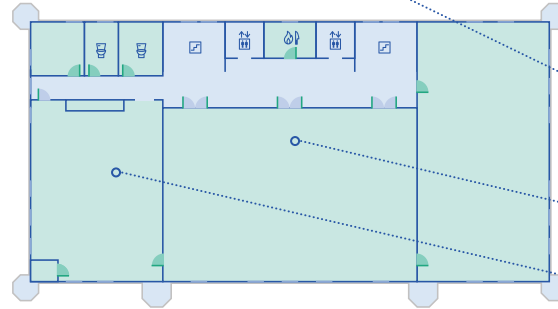
Graced with grand windows, intricate ironwork, and lofty ceilings, the landmark Franklin School, home of Planet Word, is a uniquely stunning space for your most important personal and corporate events. From the moment your guests enter the letter-paved lobby, they'll know they're in a one-of-a-kind place, surrounded by words and language in the city founded on the written word. Get ready for your guests to be inspired by the power, fun, and beauty of words while you explore our many unique voice-activated galleries and exhibits. Planet Word is proud to make our spaces available to all who share our mission to renew and inspire a love of words and language.

# Event Spaces

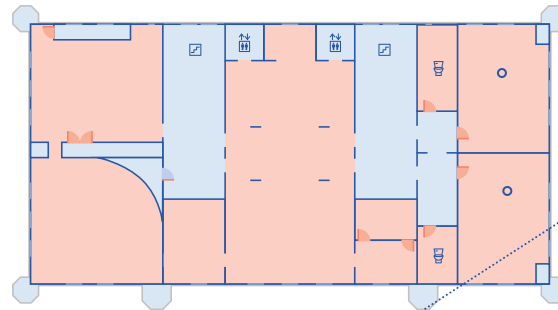
## 4 FOURTH FLOOR



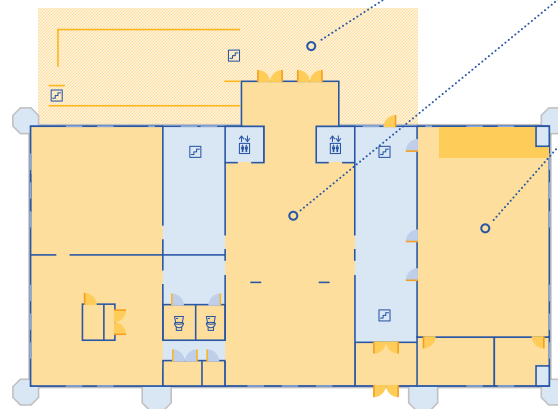
## 3 THIRD FLOOR



## 2 SECOND FLOOR



## 1 FIRST FLOOR



MANSARD ROOM

ROOFTOP TERRACE

BLOOMBERG PHILANTHROPIES GREAT HALL

WORD WALL

AT&T PLAZA

WELCOME LOBBY

FRIEDMAN FAMILY AUDITORIUM

 Bathrooms

 Stairs

 Elevator

 Kitchen



#### DIMENSIONS

2697 ft<sup>2</sup>, 67'x40'

#### CAPACITY

SEATED DINNER: 144

STANDING RECEPTION: 260

LECTURE SEATING: 216

#### AV CAPABILITIES

Decorative pendant lighting, color tunable cove lighting, 165" LCD digital screen, wireless microphones, speakers, wifi

#### OTHER FEATURES

Catering kitchen, restrooms

#### ACCESSIBILITY

Assisted listening

#### STANDARD USE

WEEKEND: \$11,500

WEEKDAY: \$9,800

NON-PROFIT WEEKEND: \$9,000

NON-PROFIT WEEKDAY: \$8,500

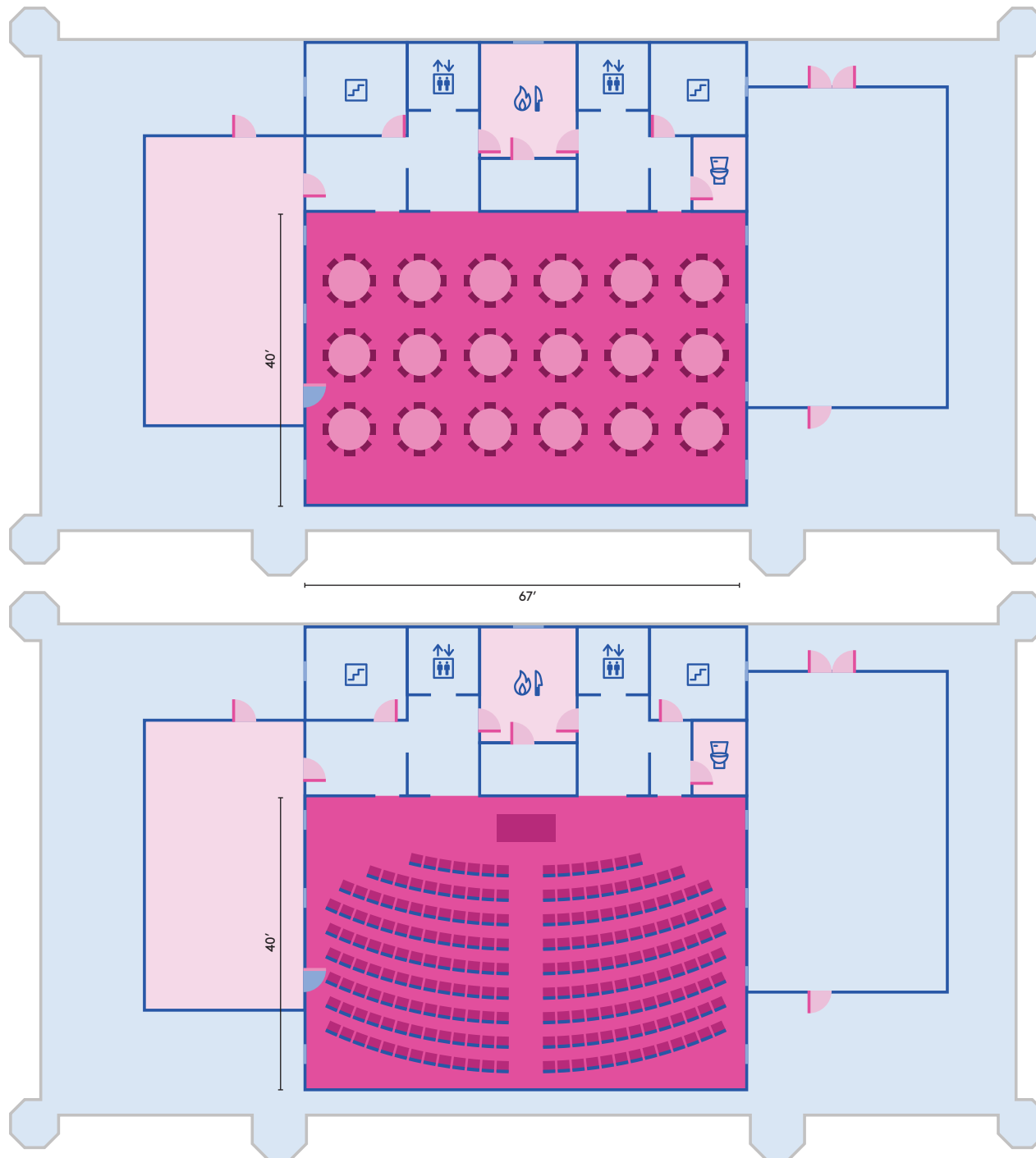


## Mansard Room

### 4 FOURTH FLOOR

Beautiful exposed beams, wood floors, and frescoed walls make this an unforgettable venue for meetings and celebrations of all sorts. Under a soaring mansard roof, this space can be configured for elegant dinners, performances, meeting, or receptions. A special exhibit commemorates inventor Alexander Graham Bell's first successful transmission of a "photophone" message from the rooftop of the Franklin School. The Mansard Room includes use of the Rooftop Terrace.

# Mansard Room



## CONFIGURATIONS





### 4 FOURTH FLOOR

#### SEATED DINNER

18 circular tables  
8 guests per table  
**144 total guests**

#### VIDEO SCREENING SEATING

9 rows  
up to 26 guests per row  
**216 total guests**

-  Bathrooms
-  Stairs
-  Elevator
-  Kitchen



#### DIMENSIONS

832 ft<sup>2</sup>, 23'x36'

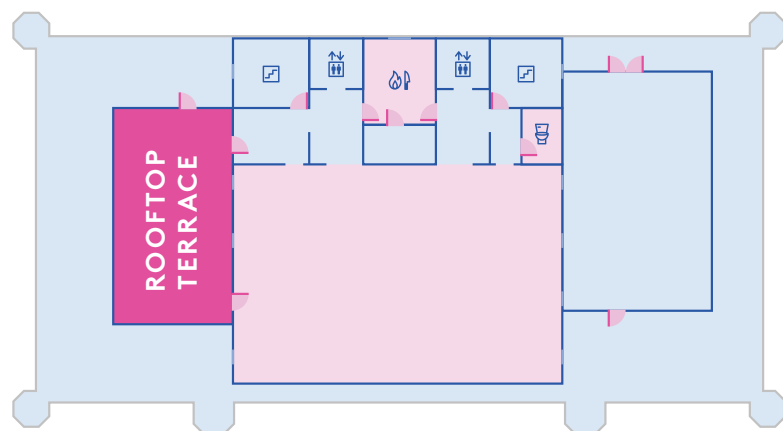
#### CAPACITY

STANDING RECEPTION: 75

#### AV CAPABILITIES

Built-in, discrete speakers;  
power; wifi

THE ROOFTOP TERRACE IS INCLUDED  
WITH THE MANSARD ROOM



## Rooftop Terrace

### 4 FOURTH FLOOR

With views north and west across verdant Franklin Square and the rooftops of the K Street Corridor, the Rooftop Terrace is a gorgeous outdoor venue for pre-dinner cocktails, post-dinner dessert, or a sunset reception.



#### DIMENSIONS

3122ft<sup>2</sup>, 67'x46'6"

CEILING HEIGHT: 22'

#### CAPACITY

SEATED DINNER: 152

STANDING RECEPTION: 300

LECTURE SEATING: 240

#### AV CAPABILITIES

Striking LED chandelier,  
wireless microphones,  
speakers, wifi

#### OTHER FEATURES

Catering kitchen, restrooms,  
green room

#### ACCESSIBILITY

Assisted listening

#### STANDARD USE

WEEKEND: \$12,500

WEEKDAY: \$11,250

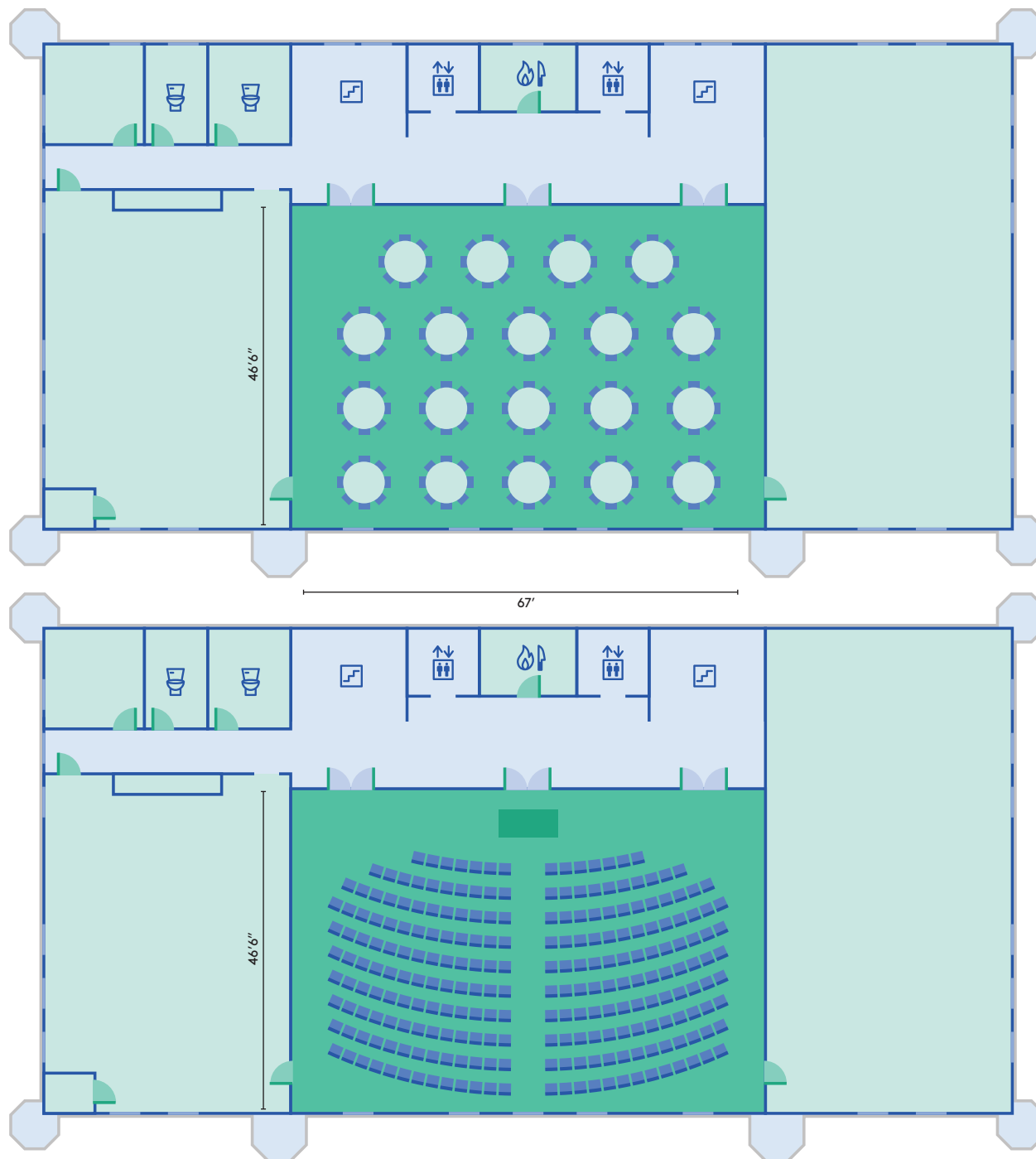


## Bloomberg Philanthropies Great Hall

### 3 THIRD FLOOR

The Bloomberg Philanthropies Great Hall is the architectural centerpiece of the Franklin School and Planet Word's showcase venue both day and night. The 5,000-LED globe that anchors the Spoken World exhibit becomes a stunning chandelier as it rises at the touch of a button up to the towering 22-foot-high ceiling. With fourteen-foot windows overlooking Franklin Square, trompe l'oeil frescoes, and a historic proscenium, the elegant, versatile Bloomberg Philanthropies Great Hall is unlike any other event space in Washington.

# Bloomberg Philanthropies Great Hall



## CONFIGURATIONS

### 3 THIRD FLOOR

#### SEATED DINNER

19 circular tables  
8 guests per table  
152 total guests

#### LECTURE SEATING

10 rows  
up to 26 guests per row  
240 total guests

- Bathrooms
- Stairs
- Elevator
- Kitchen



#### DIMENSIONS

904 ft<sup>2</sup>, 20'8" x 43'9"

#### CAPACITY

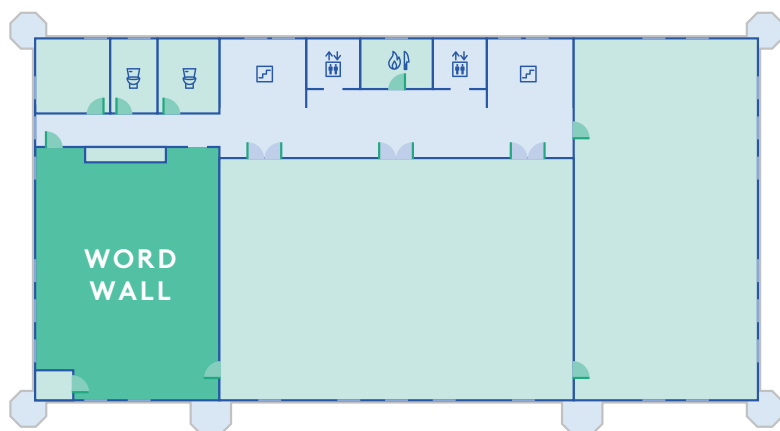
STANDING RECEPTION: 75

#### AV CAPABILITIES

Power, wifi

ADD THE WORD WALL TO  
THE GREAT HALL FOR:

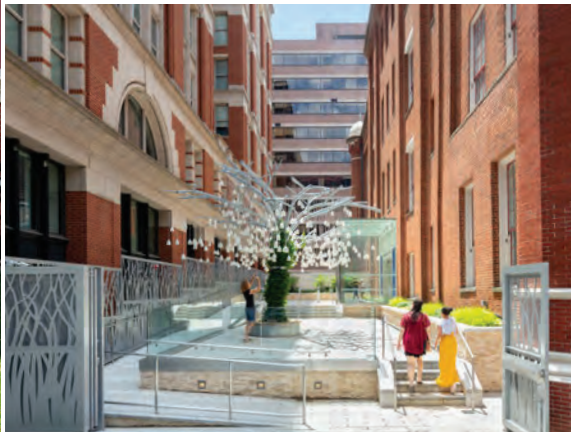
\$1,450



## Word Wall

### 3 THIRD FLOOR

The 22-foot-tall wall of words is the star of the show in this unique venue, where guests discover the etymology of words — where do words come from and what will you do with your words? The space is perfect for pre-dinner cocktails, post dinner dessert, an extra bar, or a lounge. The Word Wall can be added to any use of the Great Hall.



#### DIMENSIONS

2779 ft<sup>2</sup>, 65'x43'

#### CAPACITY

STANDING RECEPTION: 278

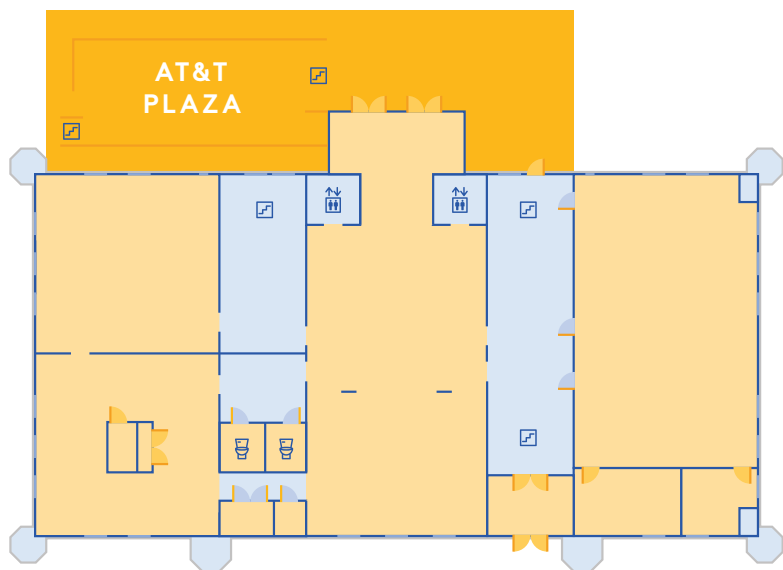
#### ADD THE AT&T PLAZA (W/ WELCOME LOBBY) FOR:

WEEKEND: \$3,000

WEEKDAY: \$2,700

NON-PROFIT WEEKEND: \$2,550

NON-PROFIT WEEKDAY: \$2,400



## AT&T Plaza

### 1 FIRST FLOOR

Anchored by Speaking Willow, an interactive sculpture from renowned artist Rafael Lozano-Hemmer, the AT&T Plaza is a ground level courtyard oasis just off K Street. The space includes a raised platform at the South end suitable for remarks, a bar, or a small band.



#### DIMENSIONS

1119 ft<sup>2</sup>, 31'x36'

#### CAPACITY

STANDING RECEPTION: 100

#### AV CAPABILITIES

Wifi

ADD THE AT&T PLAZA  
W/ WELCOME LOBBY FOR:

WEEKEND: \$3,000

WEEKDAY: \$2,700

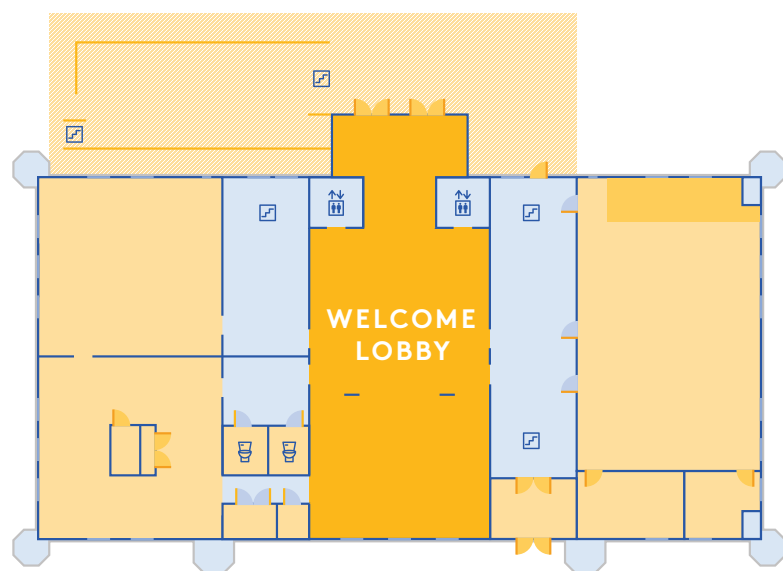
NON-PROFIT WEEKEND: \$2,550

NON-PROFIT WEEKDAY: \$2,400

## Welcome Lobby

### 1 FIRST FLOOR

Our delightful Welcome Lobby makes a flexible gathering place: its welcome desk can double as a bar and the glass-enclosed entry vestibule can serve as a check-in area. The space features graceful details like the iconic arches that define the Franklin School, and terrazzo floors embedded with a swirling design of written symbols from the past to the present. The Welcome Lobby can be combined with the AT&T Plaza or the Friedman Family Auditorium for larger events or can serve as a pre-dinner cocktail space when combined with the Bloomberg Philanthropies Great Hall.





#### DIMENSIONS

1802 ft<sup>2</sup>, 31'x58'

#### CAPACITY

AUDITORIUM SEATING: 150

#### AV CAPABILITIES

HD projector, large projection screen, architectural and theatrical lighting, built-in audio system with wireless and lavalier microphones, wifi

#### OTHER FEATURES

Green room, tech booth, outside entrance

#### ACCESSIBILITY

Assisted listening

#### STANDARD USE

WEEKEND: \$2,500

WEEKDAY: \$2,000

NON-PROFIT WEEKEND: \$2,000

NON-PROFIT WEEKDAY: \$1,500



## Friedman Family Auditorium

### 1 FIRST FLOOR

This 150-seat, beautifully appointed auditorium serves as a venue for Planet Word's public programming — film screenings, author book talks, educator convenings, and more. The space includes a dedicated AV booth and a greenroom, and offers a separate entrance right off the AT&T Plaza.

# Room Usage

EVENT SPACE	WEEKEND	WEEKDAY	NON-PROFIT WEEKEND	NON-PROFIT WEEKDAY
Full Building	\$33,000.00	\$29,700.00	\$28,000.00	\$26,400.00
Bloomberg Philanthropies Great Hall	\$12,500.00	\$11,250.00	—	—
Bloomberg Philanthropies Great Hall & Word Wall	\$13,950.00	\$12,700.00	—	—
Mansard Room & Roof Deck	\$11,500.00	\$9,800.00	\$9,000.00	\$8,500.00
Friedman Family Auditorium	\$2,500.00	\$2,000.00	\$2,000.00	\$1,500.00
Great Hall & Word Wall + Mansard Room & Rooftop Terrace	\$16,950.00	\$15,500.00	—	—
Add the AT&T Courtyard and Lobby	\$3,000.00	\$2,700.00	\$2,550.00	\$2,400.00
Add a Classroom	\$1,250.00	\$1,000.00	\$1,000.00	\$800.00
Add our Gallery Experience	\$650/hr	\$650/hr	\$650/hr	\$650/hr

# Approved Caterers

CATERER	CONTACT	INSTAGRAM
Design Cuisine	Rachel Chadderdon <a href="mailto:rchadderdon@designcuisine.com">rchadderdon@designcuisine.com</a>	<a href="https://www.instagram.com/designcuisine">@designcuisine</a>
Flavorture	Sarah Schooley <a href="mailto:sales@flavorture.com">sales@flavorture.com</a>	<a href="https://www.instagram.com/flavorture">@flavorture</a>
Spilled Milk	Amit Gulati <a href="mailto:amit@spilledmilkcatering.com">amit@spilledmilkcatering.com</a>	<a href="https://www.instagram.com/spilledmilkdc">@spilledmilkdc</a>
Well Dunn	Yulia Shegai <a href="mailto:yshegai@welldunn.com">yshegai@welldunn.com</a>	<a href="https://www.instagram.com/welldunncatering">@welldunncatering</a>
Windows	Anne Movaghari <a href="mailto:amovaghari@catering.com">amovaghari@catering.com</a>	<a href="https://www.instagram.com/windowscatering">@windowscatering</a>
Immigrant Food <i>On-site Partner</i>	Lauren O'Leary <a href="mailto:lauren@immigrantfood.com">lauren@immigrantfood.com</a>	<a href="https://www.instagram.com/immigrantfood">@immigrantfood</a>



## WHAT MEMORIES WILL YOU CREATE HERE?

### PLANET WORD

925 13th Street, NW  
Washington, D.C. 20005

[host@planetwordmuseum.org](mailto:host@planetwordmuseum.org)

PHOTO CREDITS: Les Talusan, DuHon Photography,  
and Joseph Romeo

